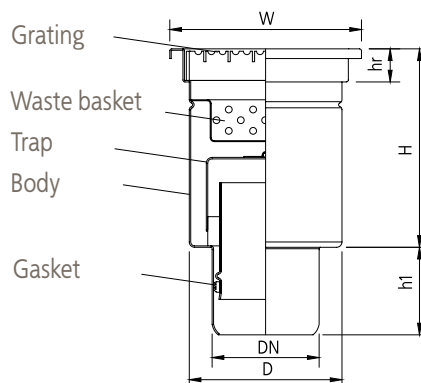


heavy duty FLOOR DRAINS vertical with square upper part, single-part



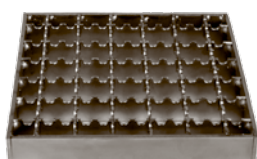
* Number or symbol of the floor drain needs to be completed with the proper grating symbol (symbols and numbers can be used alternatively).

Symbol		W200/75V1	W200/110V1	W250/110V1	W300/160V1	W400/200V1
Catalogue number mat. 304		00.005075 - *	00.005110 - *	00.001110 - *	00.001160 - *	00.001200 - *
Dimensions [mm]	DN	75	110	110	160	200
	H	194	194	234	244	354
	h1	90	90	90	90	90
	D	157	157	193	255	348
	W	200x200	200x200	250x250	300x300	400x400
	hr	30	30	30	30	30

GRATING SYMBOLS



perforated sheet - B



mesh anti-slip - K



ladder - D

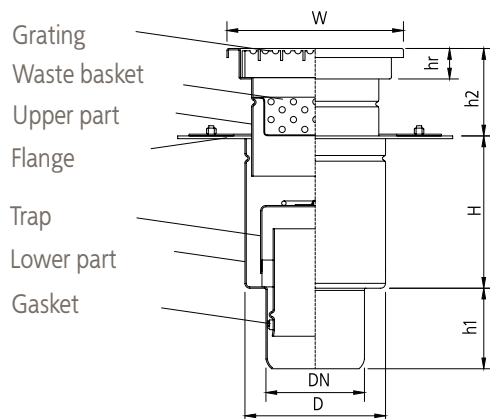


plate - P



ATT INOX DRAIN

heavy duty FLOOR DRAINS vertical with square upper part, two-part



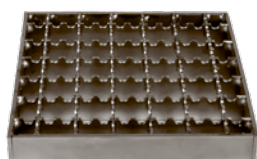
* Number or symbol of the floor drain needs to be completed with the proper grating symbol (symbols and numbers can be used alternatively).

Symbol		W200/75V2	W200/110V2	W250/110V2	W300/160V2	W400/200V2
Catalogue number mat. 304		00.006075 - *	00.006110 - *	00.002110 - *	00.002160 - *	00.002200 - *
Dimensions [mm]	DN	75	110	110	160	200
	H	160	160	200	210	320
	h1	90	90	90	90	90
	h2	50-120	50-120	50-160	50-160	50-160
	D	157	157	193	255	348
	W	200x200	200x200	250x250	300x300	400x400
	hr	30	30	30	30	30

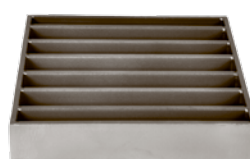
GRATING SYMBOLS



perforated sheet – B



mesh anti-slip – K



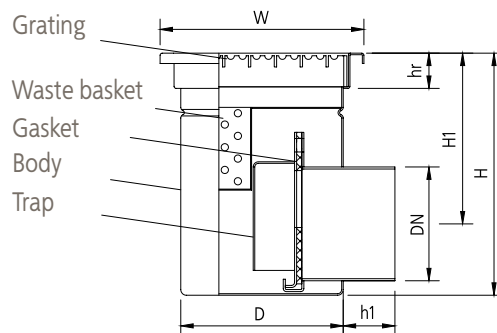
ladder – D



plate - P



heavy duty FLOOR DRAINS horizontal with square upper part, single-part



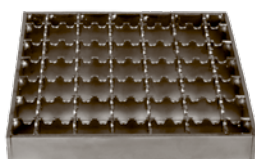
* Number or symbol of the floor drain needs to be completed with the proper grating symbol (symbols and numbers can be used alternatively).

Symbol		W200/75H1	W200/110H1	W250/110H1	W300/160H1	W400/200H1
Catalogue number mat. 304		00.007075 - *	00.007110 - *	00.003110 - *	00.003160 - *	00.003200 - *
Dimensions [mm]	DN	75	110	110	160	200
	H	244	244	244	294	354
	H1	190	170	170	194	232
	h1	50	50	100	90	90
	D	157	157	193	255	348
	W	200x200	200x200	250x250	300x300	400x400
	hr	30	30	30	30	30

GRATING SYMBOLS



perforated sheet - B



mesh anti-slip - K



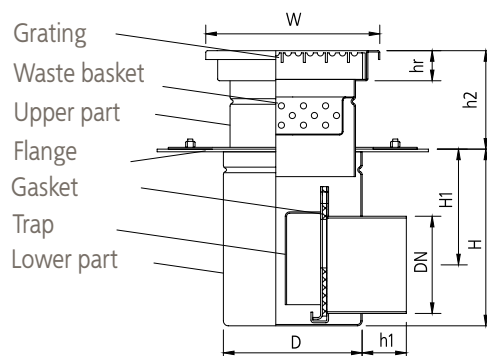
ladder - D



plate - P



heavy duty FLOOR DRAINS horizontal with square upper part, two-part



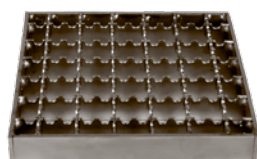
* Number or symbol of the floor drain needs to be completed with the proper grating symbol (symbols and numbers can be used alternatively).

Symbol		W200/75H2	W200/110H2	W250/110H2	W300/160H2	W400/200H2
Catalogue number mat. 304		00.008075 - *	00.008110 - *	00.004110 - *	00.004160 - *	00.004200 - *
Dimensions [mm]	DN	75	110	110	160	200
	H	210	210	210	260	320
	H1	155	140	140	160	200
	h1	50	50	100	90	90
	h2	50-120	80-120	50-160	50-160	50-160
	D	157	157	193	255	348
	W	200x200	200x200	250x250	300x300	400x400
	hr	30	30	30	30	30

GRATING SYMBOLS



perforated sheet - B



mesh anti-slip - K



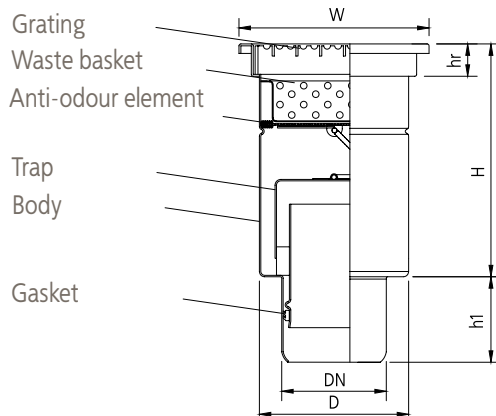
ladder - D



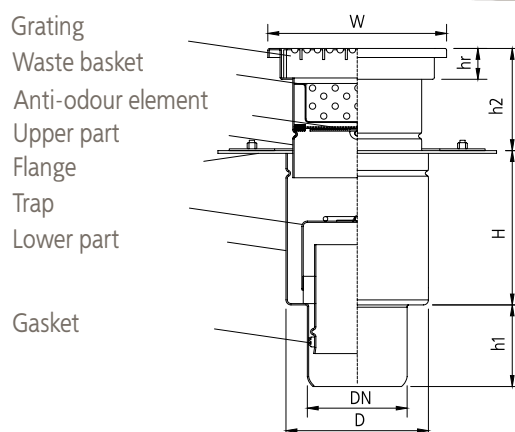
plate - P



anti-scent FLOOR DRAINS ver- tical with square upper part, single-part



anti-scent FLOOR DRAINS ver- tical with square upper part, two-part



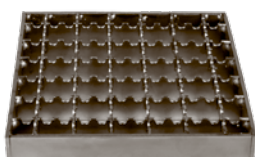
Symbol		Wa200/110V1	Wa200/110V2
Catalogue number mat. 304		00.021110 - *	00.022110 - *
Dimensions [mm]	DN	110	110
	H	245	160
	h1	90	90
	h2	-	50-120
	D	157	157
	W	200x200	200x200
	hr	30	30

* Number or symbol of the floor drain needs to be completed with the proper grating symbol (symbols and numbers can be used alternatively).

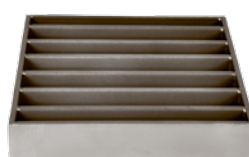
GRATING SYMBOLS



perforated sheet - B



mesh anti-slip - K



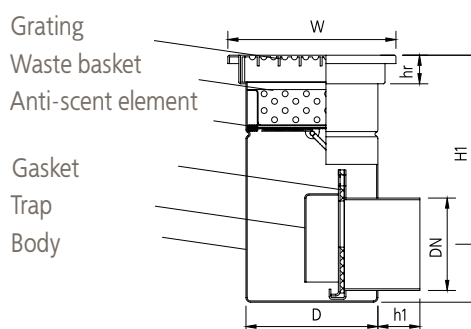
ladder - D



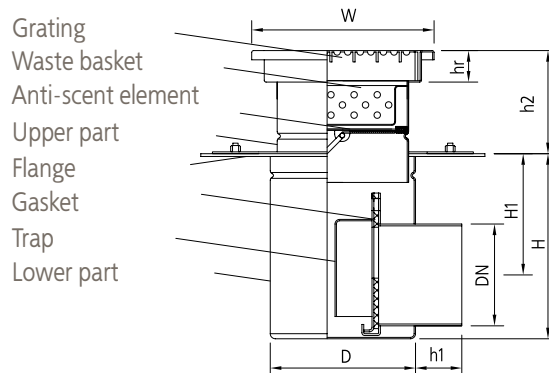
plate - P



anti-scent FLOOR DRAINS horizontal with square upper part, single-part



anti-scent FLOOR DRAINS horizontal with square upper part, two-part



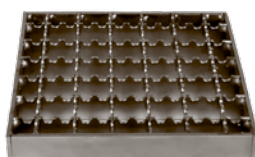
Symbol		Wa200/110H1	Wa200/110H2
Catalogue number mat. 304		00.023110 - *	00.024110 - *
Dimensions [mm]	DN	110	110
	H	294	210
	H1	225	140
	h1	50	50
	h2	-	80-120
	D	157	157
	W	200x200	200x200
	hr	30	30

* Number or symbol of the floor drain needs to be completed with the proper grating symbol (symbols and numbers can be used alternatively).

GRATING SYMBOLS



perforated sheet – B



mesh anti-slip – K



ladder – D

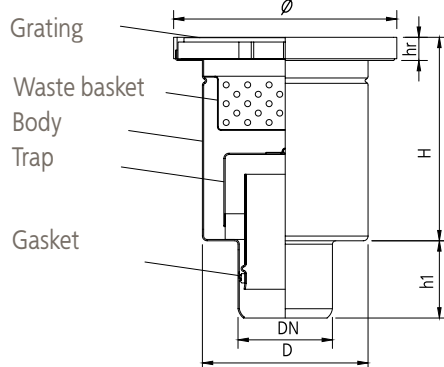


plate – P



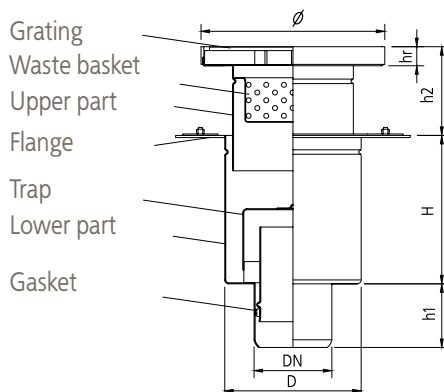
heavy duty FLOOR DRAINS vertical with round upper part, single-part

WITH OUTLET DN 110



heavy duty FLOOR DRAINS vertical with round upper part, two-part

WITH OUTLET DN 110



* Number or symbol of the floor drain needs to be completed with the proper grating symbol (symbols and numbers can be used alternatively).

Symbol		D200/110V1	D255/110V1	D200/110V2	D255/110V2
Catalogue number mat. 304		00.015110 - *	00.009110 - *	00.016110 - *	00.010110 - S
Dimensions [mm]	DN	110	110	110	110
	H	187	227	160	200
	h1	90	90	90	90
	h2	-	-	45-110	45-160
	D	157	193	157	193
	ø	200	255	200	255
	hr	25	25	25	25

GRATING SYMBOLS



mesh anti-slip - K



plate - P



ladder - D



tight cover - S



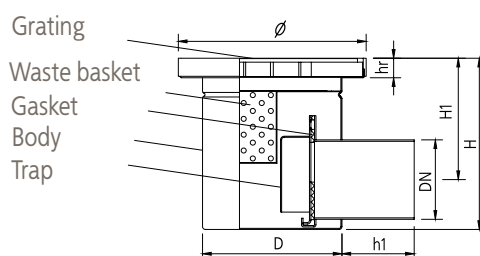
Suction cup is used to remove floor drain's tight cover grating. Suction cup is an additional element – it is not sold as a part of floor drain.



In case of floor drains with tight cover grating we use 8mm thick plate grating with circumferential gasket.

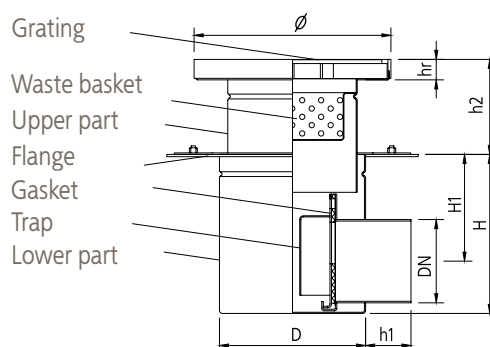
heavy duty FLOOR DRAINS horizontal with round upper part ,single-part

WITH OUTLET DN 110



heavy duty FLOOR DRAINS horizontal with round upper part, two-part

WITH OUTLET DN 110



Suction cup is used to remove floor drain's tight cover grating. Suction cup is an additional element – it is not sold as a part of floor drain.



In case of floor drains with tight cover grating we use 8mm thick plate grating with circumferential gasket.

* Number or symbol of the floor drain needs to be completed with the proper grating symbol (symbols and numbers can be used alternatively).

Symbol		D200/110H1	D255/110H1	D200/110H2	D255/110H2
Catalogue number mat. 304		00.017110 - *	00.011110 - *	00.018110 - *	00.012110 - *
Dimensions [mm]	DN	110	110	110	110
	H	237	237	190	210
	H1	165	165	120	140
	h1	50	100	50	100
	h2	–	–	45-120	45-120
	D	157	193	157	193
	Ø	200	255	200	255
	Hr	25	25	25	25

GRATING SYMBOLS



mesh anti-slip – K



plate – P



ladder – D



tight cover – S

