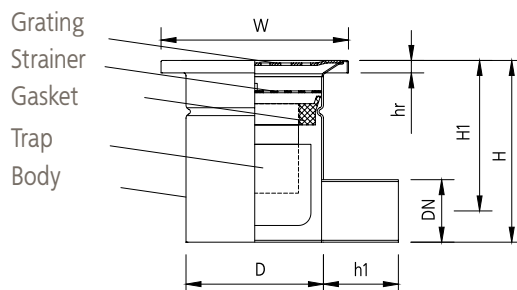
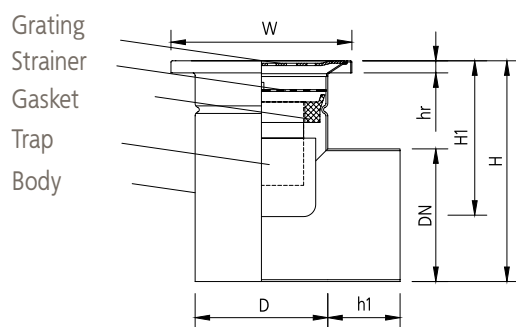


## mini FLOOR DRAINS horizontal with square upper part, single-part



**WITH OUTLET DN 50**



**WITH OUTLET DN 110**

Symbol		Wmk150/50H1	Wmk150/75H1	Wmk150/110H1
Catalogue number mat. 304		00.058050 - *	00.058075 - *	00.058110 - *
Dimensions [mm]	DN	50	75	110
	H	150	150	185
	H1	120	105	130
	h1	60	60	60
	D	110	110	110
	W	150x150	150x150	150x150
	Hr	2	2	2

\* Symbols and numbers can be used alternatively.

**FOR MINI FLOOR DRAIN Wmk150 THERE IS ONLY PERFORATED SHEET (B) GRATING AVAILABLE**

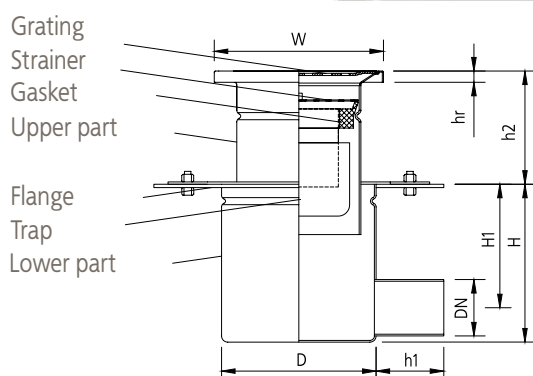


perforated sheet – B

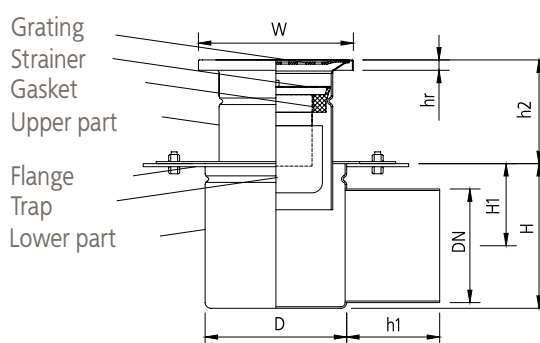


ATT INOX DRAIN

# mini FLOOR DRAINS horizontal with square upper part, two-part



WITH OUTLET DN 50



WITH OUTLET DN 110

Symbol		Wmk150/50H2	Wmk150/75H2	Wmk150/110H2
Catalogue number mat. 304		00.059050 - *	00.059075 - *	00.059110 - *
Dimensions [mm]	DN	50	75	110
	H	140	140	140
	H1	103	90	80
	h1	60	60	90
	h2	50-130	50-130	50-130
	D	137	137	137
	W	150x150	150x150	150x150
Hr		2	2	2

Symbols and numbers can be used alternatively.

FOR MINI FLOOR DRAIN W<sub>MK</sub>150 THERE IS ONLY PERFORATED SHEET (B) GRATING AVAILABLE



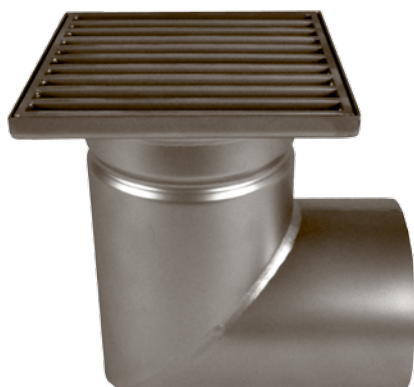
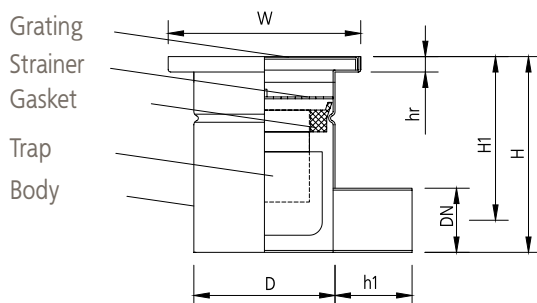
perforated sheet – B



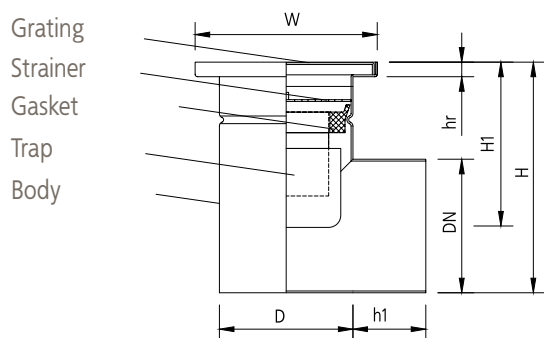
## mini FLOOR DRAINS horizontal with square upper part, single-part



WITH OUTLET DN 50



WITH OUTLET DN 110



Symbol		Wm150/50H1	Wm150/75H1	Wm150/110H1
Catalogue number mat. 304		00.042050 - *	00.042075 - *	00.042110 - *
Dimensions [mm]	DN	50	75	110
	H	150	150	190
	H1	120	110	135
	h1	60	60	60
	D	110	110	110
	W	150x150	150x150	150x150
	Hr	10	10	10

Symbols and numbers can be used alternatively.

FOR MINI FLOOR DRAIN Wm150 THERE IS ONLY LADDER (D) GRATING AVAILABLE

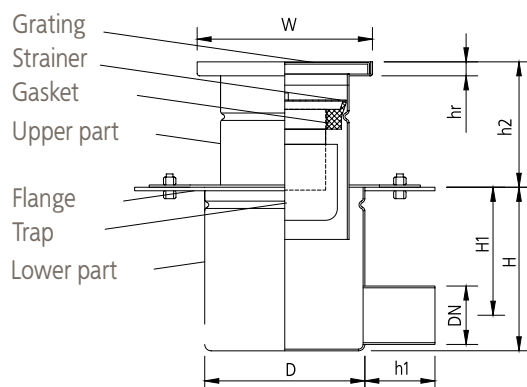


ladder - D

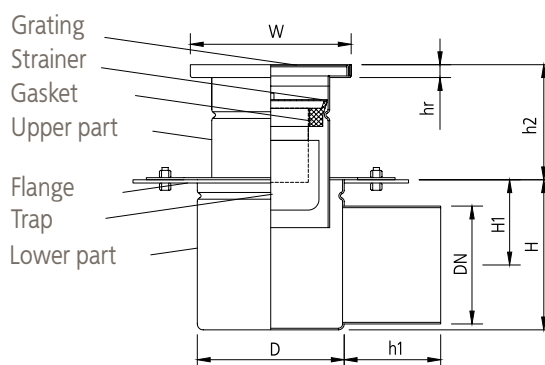
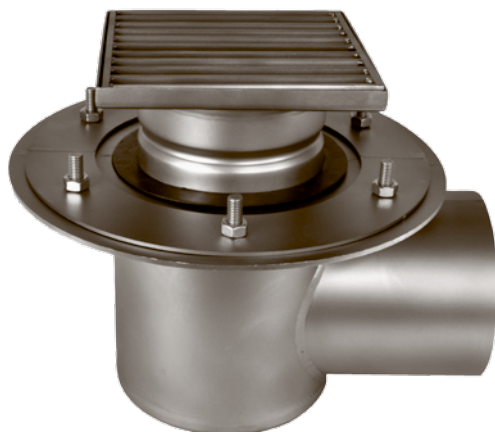


ATT INOX DRAIN

# mini FLOOR DRAINS horizontal with square upper part, two-part



WITH OUTLET DN 50



WITH OUTLET DN 110

Symbol		Wm150/50H2	Wm150/75H2	Wm150/110H2
Catalogue number mat. 304		00.043050 - *	00.043075 - *	00.043110 - *
Dimensions [mm]	DN	50	75	110
	H	140	140	140
	H1	103	90	80
	h1	60	60	90
	h2	50-130	50-130	50-130
	D	137	137	137
	W	150x150	150x150	150x150
	Hr	10	10	10

Symbols and numbers can be used alternatively.

FOR MINI FLOOR DRAIN Wm150 THERE IS ONLY LADDER (D) GRATING AVAILABLE



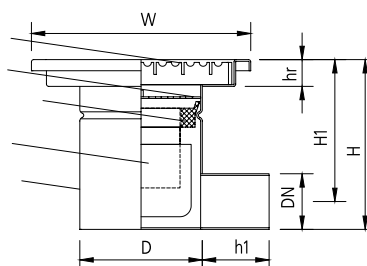
ladder - D



## mini FLOOR DRAINS horizontal with square upper part, single-part



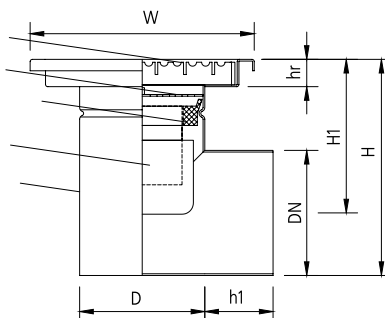
Grating  
Strainer  
Gasket  
Trap  
Body



**WITH OUTLET DN 50**



Grating  
Strainer  
Gasket  
Trap  
Body



**WITH OUTLET DN 110**

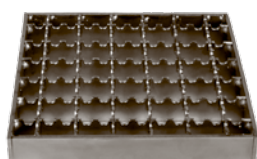
Symbol		Wm200/50H1	Wm200/75H1	Wm200/110H1
Catalogue number mat. 304		00.040050 - *	00.040075 - *	00.040110 - *
Dimensions [mm]	DN	50	75	110
	H	154	154	194
	H1	127	114	140
	h1	60	60	90
	D	110	110	110
	W	200x200	200x200	200x200
	Hr	20	20	20

\* Number or symbol of the floor drain needs to be completed with the proper grating symbol (symbols and numbers can be used alternatively).

### GRATING SYMBOLS



perforated sheet – B



mesh anti-slip – K



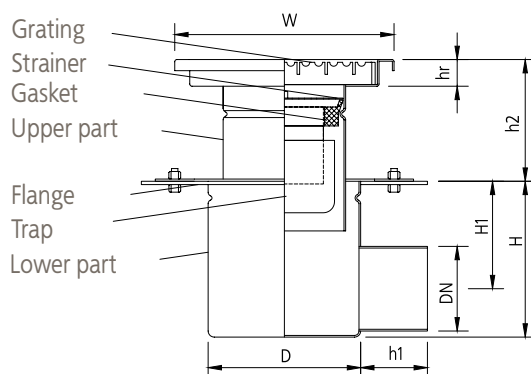
ladder – D



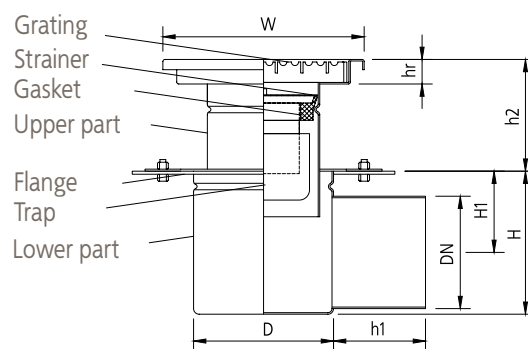
plate - P



## mini FLOOR DRAINS horizontal with square upper part, two-part



### WITH OUTLET DN 50



### WITH OUTLET DN 110

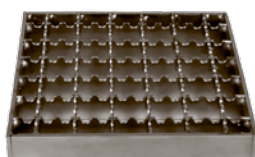
Symbol		Wm200/50H2	Wm200/75H2	Wm200/110H2
Catalogue number mat. 304		00.041050 - *	00.041075 - *	00.041110 - *
Dimensions [mm]	DN	50	75	110
	H	140	140	140
	H1	103	90	80
	h1	60	60	90
	h2	50-130	50-130	50-130
	D	137	137	137
	W	200x200	200x200	200x200
	Hr	20	20	20

\* Number or symbol of the floor drain needs to be completed with the proper grating symbol (symbols and numbers can be used alternatively).

### GRATING SYMBOLS



perforated sheet - B



mesh anti-slip - K



ladder - D



plate - P



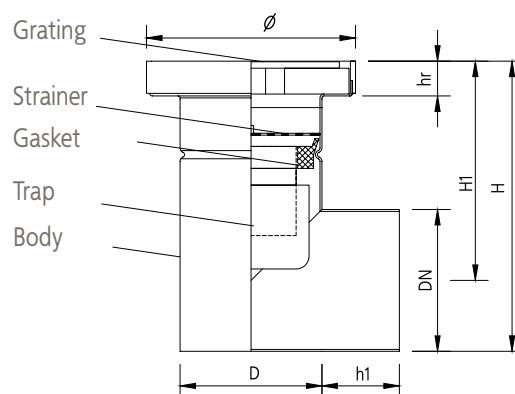
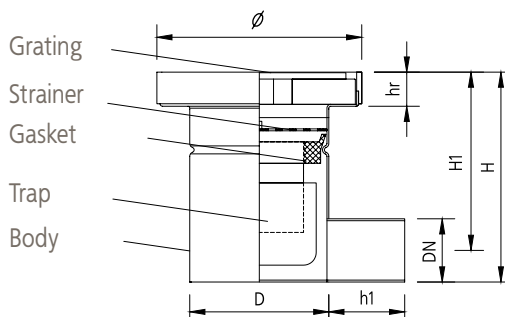
# mini FLOOR DRAINS horizontal with round upper part, single-part



WITH OUTLET DN 50



WITH OUTLET DN 110



Suction cup is used to remove floor drain's tight cover grating. Suction cup is an additional element – it is not sold as a part of floor drain



In case of floor drains with tight cover grating we use 8mm thick plate grating with circumferential gasket.

\* Number or symbol of the floor drain needs to be completed with the proper grating symbol (symbols and numbers can be used alternatively).

Symbol		Dm160/50H1	Dm200/50H1	Dm160/75H1	Dm200/75H1	Dm160/110H1	Dm200/110H1
Catalogue number mat. 304		00.046050 - *	00.044050 - *	00.046075 - *	00.044075 - *	00.046110 - *	00.044110 - *
Dimensions [mm]	DN	50	50	75	75	110	110
	H	165	165	165	165	207	207
	H1	140	140	127	127	152	152
	h1	60	60	60	60	60	60
	D	110	110	110	110	110	110
	ø	160	200	160	200	160	200
	hr	25	25	25	25	25	25

## GRATING SYMBOLS



mesh anti-slip – K



plate – P



ladder – D



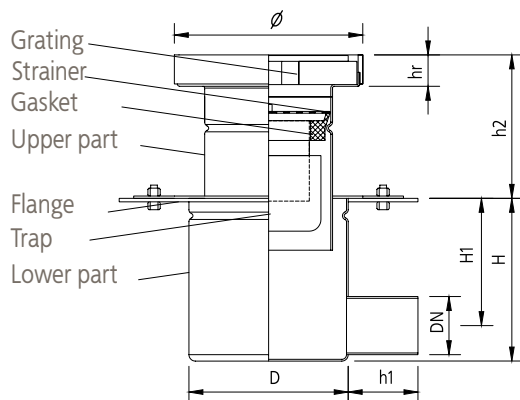
tight cover – S



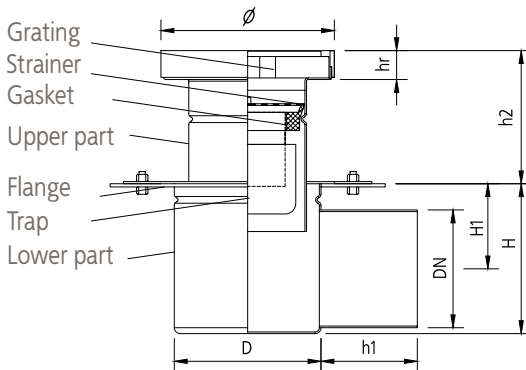
## mini FLOOR DRAINS vertical with square upper part, two-part



WITH OUTLET DN 50



WITH OUTLET DN 110



\* Number or symbol of the floor drain needs to be completed with the proper grating symbol (symbols and numbers can be used alternatively).

Symbol	Dm160/50H2	Dm200/50H2	Dm160/75H2	Dm200/75H2	Dm160/110H2	Dm200/110H2
Catalogue number mat. 304	00.047050 - *	00.045050 - *	00.047075 - *	00.045075 - *	00.047110 - *	00.045110 - *
Dimensions [mm]	DN	50	50	75	75	110
	H	140	140	140	140	140
	H1	103	103	90	90	80
	h1	60	60	60	60	90
	h2	50-130	50-130	50-130	50-130	50-130
	D	137	137	137	137	137
	ø	160	200	160	200	200
	hr	25	25	25	25	25

Suction cup is used to remove floor drain's tight cover grating. Suction cup is an additional element – it is not sold as a part of floor drain



In case of floor drains with tight cover grating we use 8mm thick plate grating with circumferential gasket.

### GRATING SYMBOLS



mesh anti-slip – K



plate – P



ladder – D



tight cover – S

