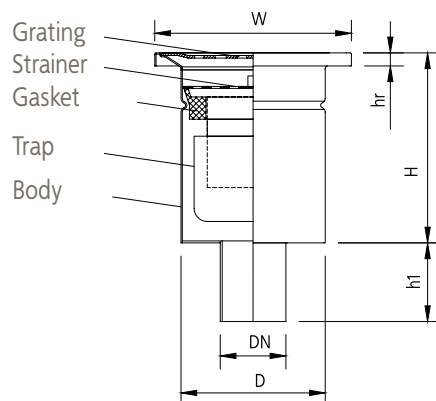


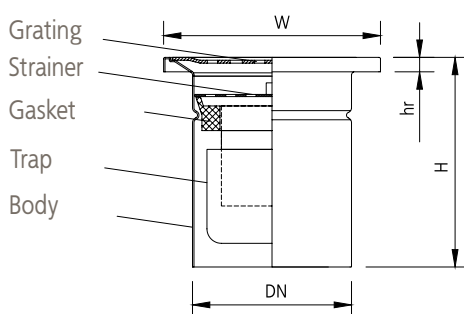
## mini FLOOR DRAINS vertical with square upper part, single-part



WITH OUTLET DN 50



WITH OUTLET DN 110



Symbol		Wmk150/50V1	Wmk150/75V1	Wmk150/110V1
Catalogue number mat. 304		00.056050 - *	00.056075 - *	00.056110 - *
Dimensions [mm]	DN	50	75	110
	H	150	150	150
	h1	60	60	-
	D	110	110	110
	W	150x150	150x150	150x150
	Hr	2	2	2

Symbols and numbers can be used alternatively.

FOR MINI FLOOR DRAIN Wmk150 THERE IS ONLY PERFORATED SHEET (B) GRATING AVAILABLE



perforated sheet – B

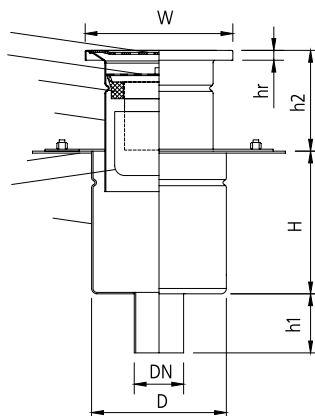


ATT INOX DRAIN

## mini FLOOR DRAINS vertical with square upper part, two-part



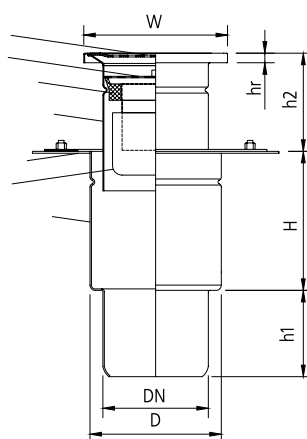
Grating  
Strainer  
Gasket  
Upper part  
Flange  
Trap  
Lower part



**WITH OUTLET DN 50**



Grating  
Strainer  
Gasket  
Upper part  
Flange  
Trap  
Lower part



**WITH OUTLET DN 110**

Symbol		Wmk150/50V2	Wmk150/75V2	Wmk150/110V2
Catalogue number mat. 304		00.057050 - *	00.057075 - *	00.057110 - *
Dimensions [mm]	DN	50	75	110
	H	140	140	140
	h1	60	60	80
	h2	50-130	50-130	50-130
	D	137	137	137
	W	150x150	150x150	150x150
	Hr	2	2	2

Symbols and numbers can be used alternatively.

**FOR MINI FLOOR DRAIN W<sub>MK</sub>150 THERE IS ONLY PERFORATED SHEET (B) GRATING AVAILABLE**



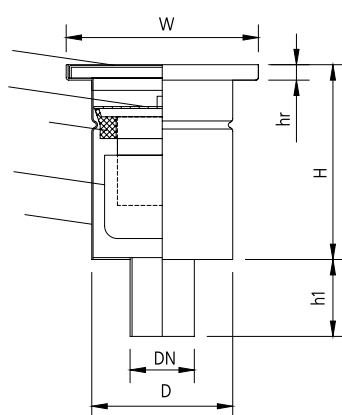
perforated sheet – B



## mini FLOOR DRAINS vertical with square upper part, single-part



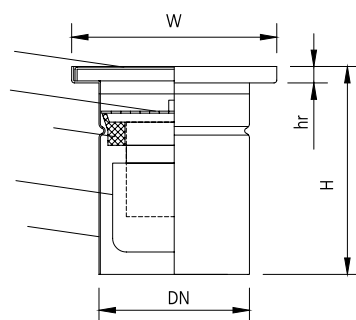
Grating  
Strainer  
Gasket  
Trap  
Body



**WITH OUTLET DN 50**



Grating  
Strainer  
Gasket  
Trap  
Body



**WITH OUTLET DN 110**

Symbol		Wm150/50V1	Wm150/75V1	Wm150/110V1
Catalogue number mat. 304		00.032050 - *	00.032075 - *	00.032110 - *
Dimensions [mm]	DN	50	75	110
	H	150	150	150
	h1	60	60	-
	D	110	110	110
	W	150x150	150x150	150x150
	Hr	10	10	10

Symbols and numbers can be used alternatively.

**FOR MINI FLOOR DRAIN Wm150 THERE IS ONLY LADDER (D) GRATING AVAILABLE**



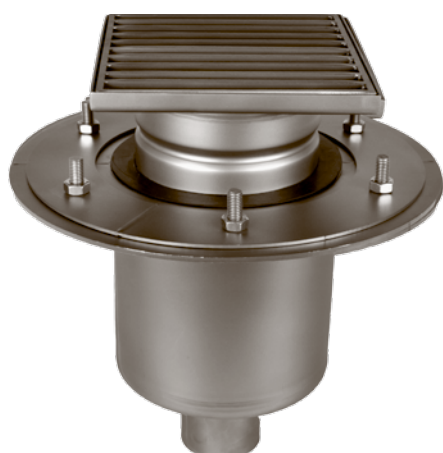
ladder - D



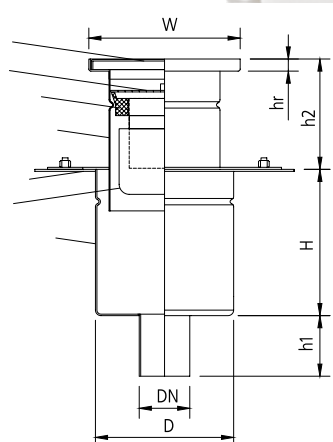
ATT INOX DRAIN



## mini FLOOR DRAINS vertical with square upper part, two-part



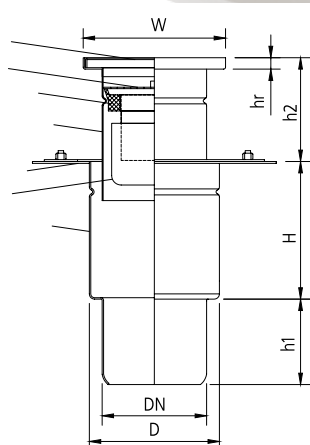
Grating  
Strainer  
Gasket  
Upper part  
Flange  
Trap  
Lower part



**WITH OUTLET DN 50**



Grating  
Strainer  
Gasket  
Upper part  
Flange  
Trap  
Lower part



**WITH OUTLET DN 110**

Symbol		Wm150/50V2	Wm150/75V2	Wm150/110V2
Catalogue number mat. 304		00.033050 - *	00.033075 - *	00.033110 - *
Dimensions [mm]	DN	50	75	110
	H	140	140	140
	h1	60	60	80
	h2	50-130	50-130	50-130
	D	137	137	137
	W	150x150	150x150	150x150
	Hr	10	10	10

Symbols and numbers can be used alternatively.

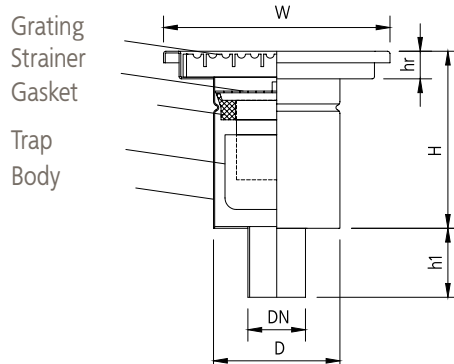
**FOR MINI FLOOR DRAIN Wm150 THERE IS ONLY LADDER (D) GRATING AVAILABLE**



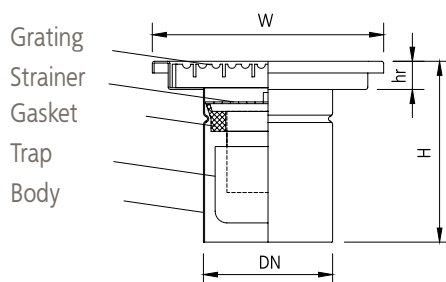
ladder - D



## mini FLOOR DRAINS vertical with square upper part, single-part



### WITH OUTLET DN 50



### WITH OUTLET DN 110

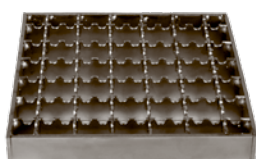
Symbol		Wm200/50V1	Wm200/75V1	Wm200/110V1
Catalogue number mat. 304		00.030050 - *	00.030075 - *	00.030110 - *
Dimensions [mm]	DN	50	75	110
	H	154	154	154
	h1	60	60	-
	D	110	110	110
	W	200x200	200x200	200x200
	Hr	20	20	20

\*Number or symbol of the floor drain needs to be completed with the proper grating symbol (symbols and numbers can be used alternatively).

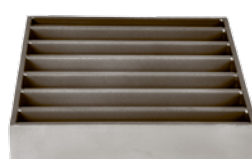
### GRATING SYMBOLS



perforated sheet - B



mesh anti-slip - K



ladder - D



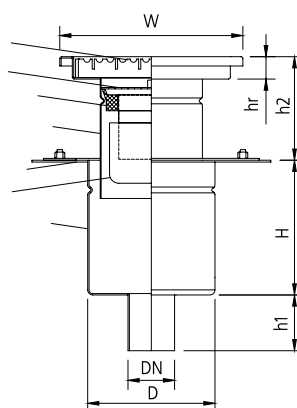
plate - P



# mini FLOOR DRAINS vertical with square upper part, two-part



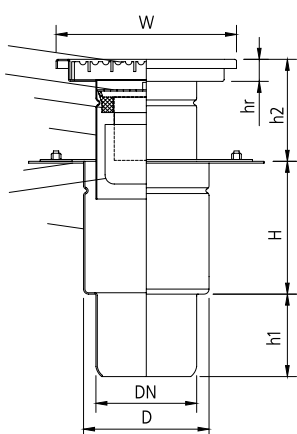
Grating  
Strainer  
Gasket  
Upper part  
Flange  
Trap  
Lower part



## WITH OUTLET DN 50



Grating  
Strainer  
Gasket  
Upper part  
Flange  
Trap  
Lower part



## WITH OUTLET DN 110

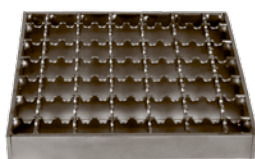
Symbol		Wm200/50V2	Wm200/75V2	Wm200/110V2
Catalogue number mat. 304		00.031050 - *	00.031075 - *	00.031110 - *
Dimensions [mm]	DN	50	75	110
	H	140	140	140
	h1	60	60	80
	h2	50-130	50-130	50-130
	D	137	137	137
	W	200x200	200x200	200x200
	Hr	20	20	20

\* Number or symbol of the floor drain needs to be completed with the proper grating symbol (symbols and numbers can be used alternatively).

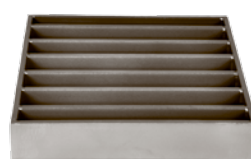
## GRATING SYMBOLS



perforated sheet – B



mesh anti-slip – K



ladder – D



plate - P

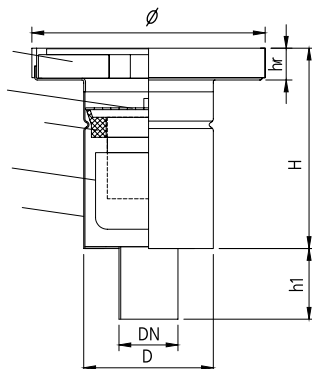




## mini FLOOR DRAINS vertical with round upper part, single-part



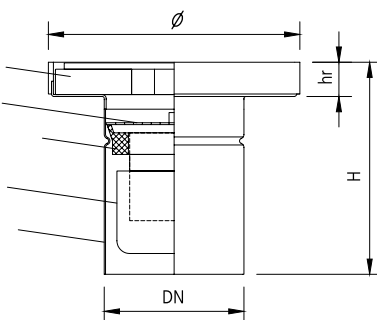
Grating  
Strainer  
Gasket  
Trap  
Body



**WITH OUTLET DN 50**



Grating  
Strainer  
Gasket  
Trap  
Body



**WITH OUTLET DN 110**

\* Number or symbol of the floor drain needs to be completed with the proper grating symbol (symbols and numbers can be used alternatively).

Symbol		Dm160/50V1	Dm200/50V1	Dm160/75V1	Dm200/75V1	Dm160/110V1	Dm200/110V1
Catalogue number mat. 304		00.036050 - *	00.034050 - *	00.036075 - *	00.034075 - *	00.036110 - *	00.034110 - *
Dimensions [mm]	DN	50	50	75	75	110	110
	H	165	165	165	165	165	165
	h1	60	60	60	60	-	-
	D	110	110	110	110	110	110
	ø	160	200	160	200	160	200
	hr	25	25	25	25	25	25

Suction cup is used to remove floor drain's tight cover grating. Suction cup is an additional element – it is not sold as a part of floor drain.



In case of floor drains with tight cover grating we use 8mm thick plate grating with circumferential gasket.

### GRATING SYMBOLS



mesh anti-slip – K



plate – P



ladder – D

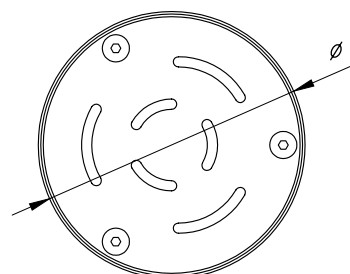
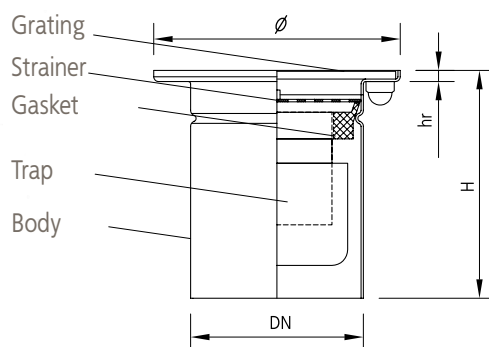


tight cover – S



ATT INOX DRAIN

# mini FLOOR DRAINS vertical with round upper part, single-part



\* Number or symbol of the floor drain needs to be completed with the proper grating symbol (symbols and numbers can be used alternatively).

Symbol		Dms160/110 V1
Catalogue number mat. 304		00.038110 - P
Dimensions [mm]	DN	110
	H	145
	D	110
	Ø	160
	hr	5

## GRATING SYMBOL



There is only 5mm thick plate perforated sheet (P) available for floor drain Dms160/110V1.



## mini FLOOR DRAINS vertical with round upper part, two-part



WITH OUTLET DN 50

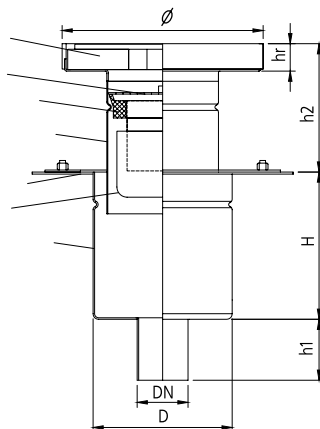


WITH OUTLET DN 110

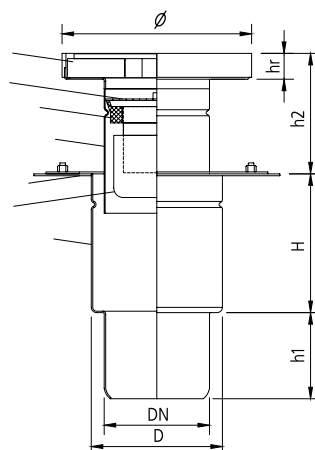
\* Number or symbol of the floor drain needs to be completed with the proper grating symbol (symbols and numbers can be used alternatively).

Symbol		Dm160/50V2	Dm200/50V2	Dm160/75V2	Dm200/75V2	Dm160/110V2	Dm200/110V2
Catalogue number mat. 304		00.037050 - *	00.035050 - *	00.037075 - *	00.035075 - *	00.037110 - *	00.035110 - *
Dimensions [mm]	DN	50	50	75	75	110	110
	H	140	140	140	140	140	140
	h1	60	60	60	60	90	90
	h2	50-130	50-130	50-130	50-130	50-130	50-130
	D	137	137	137	137	137	137
	ø	160	200	160	200	160	200
	hr	25	25	25	25	25	25

Grating  
Strainer  
Gasket  
Upper part  
Flange  
Trap  
Lower part



Grating  
Strainer  
Gasket  
Upper part  
Flange  
Trap  
Lower part



Suction cup is used to remove floor drain's tight cover grating. Suction cup is an additional element – it is not sold as a part of floor drain.



In case of floor drains with tight cover grating we use 8mm thick plate grating with circumferential gasket.

### GRATING SYMBOLS



mesh anti-slip – K



plate – P



ladder – D



tight cover – S

